



A COMMUNITY WHERE DIVERSITY  
IS VALUED, COMMUNICATIONS  
ARE ENCOURAGED AND AN  
ATTITUDE OF LEARNING FROM  
ONE ANOTHER IS RESPECTED

# THE SUMMERFIELDS

## SPOTLIGHT

FOCUS ON THE NEIGHBORHOOD

December 2021

A Publication of the Summerfields Neighborhood Association

## ‘Tis the Season to be Jolly, and for “Porch Pirates”

The Christmas season is a time for gathering with family and friends, for giving thanks and sharing. However, take care and don't let “Porch Pirates” put a damper on the season. To help you avoid becoming a victim, I extracted the following information was extracted from The City of Fort Worth's website:

As if supply chain shortages weren't enough to deal with this holiday season, now there's another problem – porch pirates.

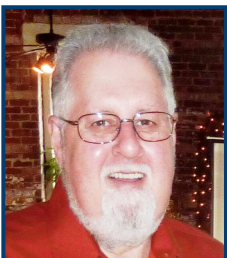
Porch pirates are people who steal packages delivered to homes. Some drive around neighborhoods looking for packages left at front doors. Others tail FedEx or UPS trucks, waiting for packages to be delivered. After the delivery truck drives away, they swoop in, pick up the package and drive away.

“This will not be tolerated in Tarrant County,” said Sharen Wilson, Tarrant County's criminal district attorney. “We will prosecute these thieves trying to cash in by stealing people's packages.”

(Continued in Porch Pirates on page 4).



## SNA Presidents Corner



I hope everyone had a great Thanksgiving. I really love this time of the year, I just wish the spirit of the season could last throughout the year. I want to wish everyone a wonderful holiday season, good health, and hope you have an opportunity to safely spend special times with family and friends. We as Americans have so much to be thankful for, even with this diminishing but ongoing pandemic.

We've had some very favorable feedback with the live video streaming of our quarterly membership meetings. We are very happy that those concerned with COVID exposure have a way to watch the meeting. We are still attempting to find a way for the video participants to communicate with the meeting in real time. We will continue with the videos and hopefully in the near future find a way to host remote participation in real time. Many thanks to Nabile Chahine, our Treasurer and technical guru, for pulling all this together.

At our last SNA Board meeting, we discussed going forward with two initiatives. One is to establish a presence on Facebook to make residents aware of the Association and the second is to use volunteers to establish an organized Code Compliance program

We will be working with the Summerglenn Library to set up the dates for our four General Membership meetings at their facility. We are restricted to the nights the library is open late. We will inform our members when those dates are finalized.

### Table of Contents

Pg 2-3 Development

Pg 4 City News

Pg 5-6 Code Info

Pg 7 Crime Map

## New Area Businesses



The demolition is complete on the vacant bank building located at the N. Beach and Spoonwood intersection in the back of the Albertson's Center. We know a new business facility will be built on that site—they would not incur the costs of demolition without plans to quickly use this commercially zoned land. The SNA is making inquiries as to what sort of business is planned for this location.

The Summit, a cigar bar, has leased the space in the strip center on the north side of the 3000 block of Western Center Blvd., near the I35W access road. They are renovating the space formerly occupied by Jake's Burgers.

Work has commenced inside the vacant building at 6730 Fossil Bluff Drive. This building once housed Fat Daddy's Bar and Grill. The SNA assumes it will be another Bar/Restaurant, but we are trying to verify what is going in at this location.

---

## Developments Currently in Progress

Penny Paws Veterinary Clinic's new facility is well into construction in our area. It is located in the 3800 block of Basswood on the vacant land between the existing 7-11 convenience store and the child care center. No completion or opening date is known. It will include full veterinary services and animal boarding services complete with an outside exercise yard that permits workers to take animals outside one at a time throughout the day.

A convenience store is under construction at 4550 Basswood Blvd., just to the east-of Ace Hardware. Long-time residents may remember that this site originally had a privately run recreational facility with tennis courts and a swimming pool. It went out of business in the early 1990s and has been vacant until now.

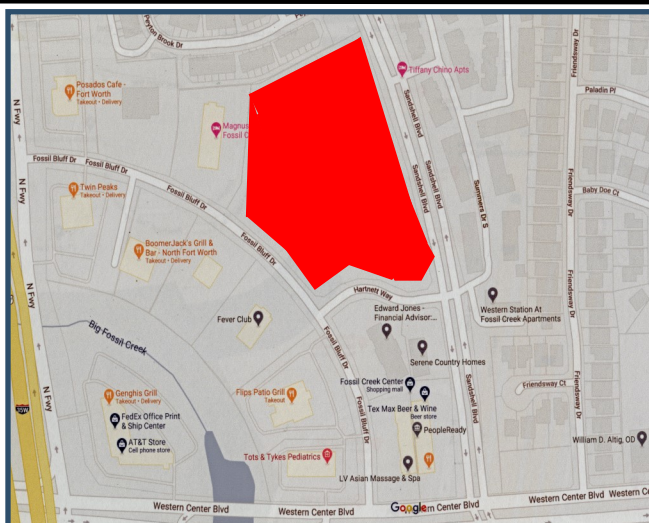
A car wash is nearing completion at the southwest intersection of Sandshell and Basswood Blvds. The facility should open in the not too distant future.

---

## KISD School Construction Continues in our Area

Since construction on the new Parkview Elementary school started in April, 2021, progress can be seen from the streets. The steel framework for one of the new buildings can be seen going up behind the existing school. The old facilities will be torn down in stages, the current facility has to support students for the remainder of the 2021/22 school year. After completion of the new two story structure much of the old-school will then be taken down. The project is scheduled to complete in June 2022.

The construction phase of the renovation of Fossil Hill Middle School started on April 1st. Fencing has been installed in the parking lot behind the school. The renovation is scheduled to complete in June 2022.



## Standard Multi-Family Apartments Proposed In Our Area

A zoning change has been approved to allow construction of a 200 unit apartment complex on the land bordered by Fossil Bluff, Hartnett, and Sandshell Blvd.

This is the land just to the south of the Carriage Place townhomes, who's Association the SNA supported during the zoning process.

While the SNA has traditionally opposed new standard multi-family zoning changes, this is not a normal situation. Because of the risk of less desirable construction we conditionally supported building apartments on this land. No date is known for the start of construction.

## Area Road Construction Updates

The extension of the I35W access road from Western Center south and west to the Mark IV Parkway and Loop 820 intersection is well under way. This will allow residents who want to go west on Loop 820 to stay on the I35W south access road from Western all the way to Mark IV, avoiding the traffic snarl of the I35W and Loop 820 interchange. Once completed, we will probably soon see the start of commercial and industrial development on the vacant land along the access road.

The Basswood and N. Beach intersection improvement project, funded in the City's last Capital Improvement Program (CIP) bond package, started in April. This project will install two turn lanes in every direction to help alleviate traffic congestion at this busy intersection. It will also install curbs and controlled crossings at all intersections, update the traffic light system, and add lane signs. It is scheduled to complete in December 2021.

The project to widen N. Riverside Drive to a four lane road from North Tarrant Parkway northward to the Shiver Road roundabout started in July. Completion is schedule for August 2022. This second N. Riverside Drive road improvement project will provide four lanes from N. Tarrant Parkway northward to the existing Shiver Road traffic circle . It will also rework all four sides of the N. Tarrant and N. Riverside intersection, complete with updated traffic signals and crossings.

The Creekfall replacement project is now complete. The street was completely replaced, along with the installation of new curbs, driveway tie-ins to the new street, and a sidewalk. If no sidewalk exists, the City includes new sidewalk installations in these projects apparently without consulting the residents.

---

## Other Developments

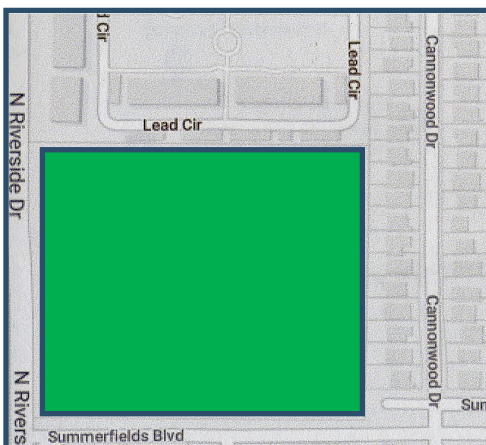
Another seniors only housing facility (55+) is being planned for our area. The proposed location is on the west side of North Beach Street just north of North Tarrant Parkway. It is planned for the vacant land behind the strip center on the west side of North Beach (behind the Sonic). This development is still in the early stages and is working it's way thought the zoning/platting process with the City.

The Starbucks on North Beach Street near the Wal-Mart parking lot is now complete. It is now open for business.

---

## Ground Broken on a Senior Housing Apartment Complex

With the completion of the southern N. Riverside and Summerfields Blvd. road projects, construction has started on the seniors only (55+) multi-family project. The SNA supported this project because we felt it was a better fit than what could be built under that sites commercial zoning. We believe it will have a minimal traffic impact, offer a much needed housing option to area seniors, and pay KISD school taxes without adding any children to the school system. We thought these positives outweighed the loss of a weed-filled field with many low quality trees or a possible strip center.



Concept Drawing



## Porch Pirates (continued from Page 1)

This crime is a concern as online shopping continues to be increasingly popular with consumers. This way of shopping has grown in popularity through the years and swelled during the COVID pandemic, when people stayed home to try to slow the spread of the virus. Porch pirates capitalized on that, picking up packages that had been delivered but not retrieved.

This crime is considered theft of mail. If the theft involves packages from less than 10 different addresses, it's a Class A misdemeanor punishable by up to one year in jail and a \$4,000 fine. In Tarrant County, there were 69 of these cases in 2020 and 51 through October 2021.

As online shopping gears up for the holidays, take precautions:

- Track your package so you know where it is and what day it is scheduled to deliver.
- Consider shipping your packages to work – or to a friend or relative who will be home and can collect them when they are delivered. In-store pickups and Amazon lockers are other options.
- Install security cameras or package theft alarms at your home.
- Schedule your packages to arrive when you are home.

If you are a victim: File a claim with the merchant and the shipper. If you have any evidence of the theft, especially if you have video footage, contact your local police department.

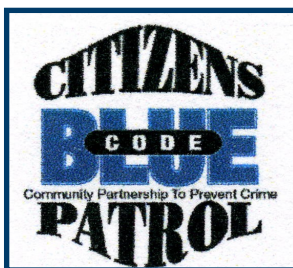
---

## Volunteer Crime Prevention Programs

The City of Fort Worth and the Fort Worth Police Department offer many crime prevention programs for its residents. Two of the most popular are Crime Watch and Citizens on Patrol. Fort Worth has thousands of volunteers currently active in these two programs and both have proven very effective in reducing neighborhood crime. Summerfields has active volunteers in both programs.



Crime Watch is a very successful national program administered by the Fort Worth Police Department. Crime Watch establishes and trains a block of neighbors on how to look after their street. Once a sufficient number of residents in a block are organized, Crime Watch signs are posted on their street and they are trained on how to identify and report possible criminal activities they observe. Who better than the people who live on a street to notice out of place cars and suspicious activity. It's simply good neighbors knowing what to look for and watching out for each other. If you are interested in forming a Crime Watch on your street, you can contact FWPD Crime Prevention Specialist Rosalinda Mendoza at 817-392-3170.



The Citizen on Patrol (COP) program trains citizen volunteers to actively patrol their community in cars, on foot, and on bicycles. Once volunteers pass a background check, complete a four hour training class, and complete a training ride with an experienced Citizen on Patrol member, they patrol their neighborhoods as their own schedule allows. Upon completion of the training these volunteers are issued police radios and equipment and are ready to patrol on their own.

COP patrollers carry no weapons. There are no scheduled patrols, volunteers simply go out when they have the time. These patrols are strictly non-confrontational, COP patrollers do not approach or get involved in any way with possible offenders. They simply act as extra eyes and ears for the police. They observe, report, and stay at a safe distance from the incident they are observing. Fort Worth's Citizen on Patrol program has received national and international acclaim.

If you are interested in joining Citizens on Patrol, you can contact the North Division COP Coordinator Cindy Strause at 817-392-3172.

Our main code issue in Summerfields is solid waste incorrectly placed curbside. Not following the guidelines usually results in waste not picked up, which detracts from the street's appearance and can lead to fines. No one wants to live in a neighborhood with trash sitting by the street for too long. It detracts from the neighborhood's appearance, makes selling homes more difficult, and eventually lowers property values. Because of this the SNA aggressively monitors waste disposal violations and reports them to Code Compliance. We do not like reporting violations that can result in fines, but there is often no alternatives left to us, We much prefer that residents become educated on the City's waste disposal processes, but will not stand idle while trash accumulates in our neighborhood.

The following are the most common violations we observe:

- Plastic bags containing solid waste (including leaves) placed curbside. *Anything in a plastic bag must be placed in the brown garbage cart to be picked up.* Hardware stores sell acceptable paper yard bags for disposing of yard recyclable waste such as clippings, leaves and small branches
- Bulk waste placed curbside too early, sometimes up to three weeks before the next scheduled pickup. Doing so detracts from the street's appearance and could impact neighbors trying to sell their homes.
- Placing bulk waste too close to objects in the yard. Many of the trucks use hydraulic arms to load waste, and if you place it too close to objects such as mail boxes or light poles it may prevent them from picking it up.
- Different types of bulky waste mixed together. Brush and paper-bagged leaves should be separated from furniture and other bulk items. They are picked up by different trucks and go to different locations. Brush and yard clippings are taken to a City facility where along with the paper bags are converted into mulch. This is the main reason they will not pick up yard waste in non-recyclable plastic bags.
- Mixing waste and recyclable items in the Recycle container. Waste and recyclables are picked up by different trucks. Contaminating the Recycle container with household waste will result in the bin not being emptied.
- Placing household and yard chemicals in the recycle or trash containers. These items should be taken to the Environmental Collection Center (ECC) on Bridge Street. You simply drive though, show your driver's license to show you are a Fort Worth resident, and they empty your vehicle for you. See details on the City's web site.
- Placing any electronic item or major appliance curbside for pick up. All electronics should be taken to Brennen Street for disposal. Electronic items such as TVs have integrated circuitry that contain hazardous chemicals such as arsenic. They are disposed of separately so as not to contaminate the landfills.
- Overflowing Waste and Recycle bins. Called "snow cones" because the lid cannot be closed, they can result in the bin not being emptied. Again, the trucks are automated and if the operator feels they cannot empty the container without spillage they will usually bypass the container, thus leaving the resident with another week before it is again eligible for pick up.
- Trash bins left on the street for days after the scheduled pickup date.

Also remember that small limbs (less than 8 feet in length and four inches in diameter) can be placed curbside for pickup with your scheduled weekly trash. Only larger limbs have to wait for the monthly bulk pick up..

## BULK WASTE GUIDELINES

**Note: Bulk pickup week for Summerfields begins on the second Monday of each month and runs through the following Saturday. Bulk waste should not be placed curbside until the weekend before your scheduled pickup week. For more information we urge our residents to visit the Solid Waste webpage on the City's website (see the link at the end of this article).**

The following information was provided by the City of Fort Worth Solid Waste Department:

**Bulk collection is once a month. The New guidelines are in place, so brush up before your next monthly collection**

The city's Solid Waste Services has new easy-to-follow steps to make residential bulk collection safer and more effective for pickup. (continued on page 6)



## BULK WASTE GUIDELINES—Continued from page 5

The goal is to not only collect the waste, but to dispose of it in a safe manner and, when possible, keep it out of the landfill. For example, tree limbs, branches and yard waste are turned into mulch.

To help curbside pickup go as smoothly as possible, follow the program directions and avoid incurring fines. Here are some best practices and program guidelines:

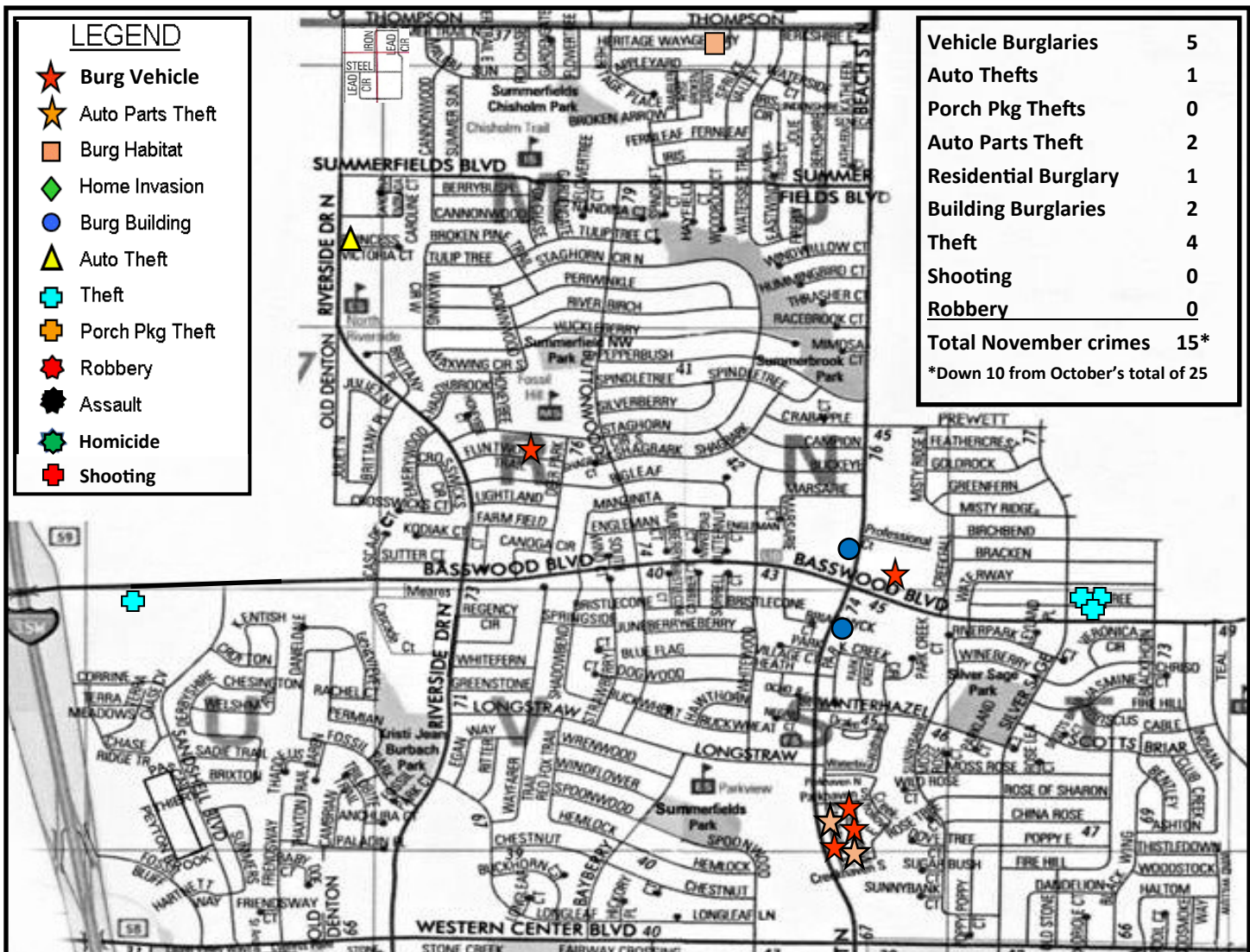
- Bulk items must be placed on the curb by 7 a.m. Monday of your scheduled collection week. Make sure the pile is not blocked by a vehicle.
- Bulk piles are limited to 10 cubic yards (6 feet by 8 feet by 6 feet), the size of a Volkswagen bug car.
- Plastic bags are not allowed outside the trash cart; residents may incur fines if plastic bags are placed curbside.
- All piles, paper yard waste bags and carts must be separated by at least 2 feet to be collected and to avoid extra fees. No materials can be placed between piles since this creates one large, out-of-compliance pile.
- Any items that fit in the brown garbage cart are not considered bulk and should be put in plastic bags and then placed into the brown garbage cart.
- Large limbs refers to those more than 4 inches in diameter and over eight feet long. Brush smaller than this is considered yard waste and can be collected at the curb on your weekly trash pickup day as part of the yard waste collection program. It must be separated from items like mail boxes, carts, large limbs and any bulk piles

To learn more about the program details, including what materials cannot be set out for bulk collection, check the Solid Waste webpage. <http://fortworthtexas.gov/solid-waste/bulk/>.

Solid Waste Services At-A-Glance					
Questions? Download the Fort Worth Garbage & Recycling App					
	WHEN	HOW	AMOUNT/SIZE	DETAILS	NO
<b>YARD</b>	Weekly on pickup day; set out by 7 a.m.	In paper bags, or optional purchase of green yard cart	Unlimited paper yard bags - 30 gallon size	Place 2 ft. from carts or other objects (cars, trees, mailboxes, water and gas meters.)	No plastic bags or trash
<b>Yard Trimmings</b> Leaves, twigs, grass, shrubs					
<b>Brush, Tied</b> Small Branches	Weekly on pickup day; set out by 7 a.m.	Bundled, tied with string or twine	Unlimited bundles, 8 ft. long, 40 lb. max	Place 2 ft. from carts or other objects	No nylon or plastic straps, ties or wire
<b>Brush, Untied</b> Large Branches	Weekly on pickup day; set out by 7 a.m.	Stacked branches only. All branches should be in one pile	Limited to 10 cubic yards (8 ft. long x 6 ft. wide x 6 ft. tall) max, about size of VW Beetle car. Branches no longer than 8 ft. and up to 4 inches in diameter	Place 2 ft. from carts or other objects. More than 10 cubic yds. collected within 72 hours billed to resident	No stumps, plastic bags, trash, fencing, lumber, or household bulk items
<b>RECYCLING</b>	Weekly on pickup day; set out by 7 a.m.	Unbagged items. Close cart lid completely. Clean, dry and empty items.	As much recycling as can fit with the blue cart lid closed. Second blue cart available on request - free.	May take extras to a drop-off station. Only put acceptable items in the cart. Place 2 ft. from carts or other objects	No plastic bags, Styrofoam, paper towels, food, plastic wrap, electronics, clothes, medical waste
Visit website or app for all items that can be recycled. <b>Blue Cart</b>	Can set cart out after 6 p.m. the day before your pickup day				
<b>GARBAGE</b>	Weekly on pickup day; set out by 7 a.m.	In tied plastic bags inside brown cart. Close lid completely. Place 2 ft. from carts or other objects.	Your choice: a -32, 64- or 96-gallon cart (price varies with size). As many bags as can fit in brown cart with lid closed	Options for extra garbage: 1. Take to drop-off station 2. Upgrade cart size 3. Purchase city-authorized Pay Bags	No unbagged items; no bags outside cart or stacked on cart
Household waste only. <b>Brown Cart</b>	Can set cart out after 6 p.m. the day before your pickup day				
<b>BULK ITEMS</b>	Monthly on pickup day; set out by 7 a.m. the Monday of your assigned week; pickup will be any time between that Monday and Saturday	Stacked on curb in one pile. Acceptable items that are too large to fit in the garbage cart. Separate household bulk and large brush piles	Limited to 10 cubic yds. (8 ft long x 6 ft. wide x 6 ft. tall) max; size of a VW Beetle car. More than 10 cubic yds. billed to resident.	Can be set out after 6 p.m. the Friday before your assigned week. Includes fencing, stumps, lumber in bulky pile. Take extra to a drop-off station	No plastic bags, tires, glass, business waste, electronics, sheet-rock, or appliances with coolant or gas
For items too heavy/bulky for the cart. Visit the website or app for more details. Place 2 ft. from carts or other objects.					
<b>DROP-OFF STATIONS</b>	Open: M-F 8 a.m. - 6 p.m. Sat 8 a.m.- 5 p.m. (Hours subject to change)	Drop-off Station #1: 2400 Brennan Ave. 76106 Drop-off Station #2: 5150 Martin Luther King Jr. Frwy 76119 Drop-off Station #3: 6260 Old Hemphill Rd. 76134 Drop-off Station #4: 301 Hillshire 76052	Bring a recent water bill, drivers license or other official ID to prove Fort Worth residency	No commercial waste, no rock or concrete	
Fort Worth Residents Only. Accepting recyclables, brush, electronics, items for Goodwill and more!	Free for Fort Worth Residents				



## Summerfields Area Crime Map for November 2021



### Summerfields Crime Trends for November 2021:

- November was a very good month. Property crimes decreased by 10 from September's total of 25. All crime categories saw a decrease. Most of the activity was along N. Beach between Western Center and Basswood.
- Three of the thefts were at one location and involved internet fraud.
- The City is seeing a large increase in violent crimes—assaults, homicides, robberies and shootings. The North Division violent crime rate remains very low, with most violent crimes being domestic related.
- All of Fort Worth is seeing a spike in catalytic converters taken from vehicles parked outside and at businesses.

### Crime Prevention Recommendations:

- If you park your car in the driveway, on the street or in a business parking lot, make sure it's locked. Most car burglaries are of unlocked vehicles. We have car burglars from all over Fort Worth come to our area and police say this is because our area has a reputation among thieves for not securing our property!
- Do not leave anything visible from the outside the vehicle. Doing so could motivate a burglar to forcibly enter.
- Close and lock your garage door. Remember, the door from your garage into your house is usually very flimsy!
- Request an assessment of your homes security from FWPd North Division Crime Prevention Specialist Rosalinda Mendoza (817-392-3170). She will survey your home and make recommendations on how to increase your security.
- Report individuals walking the residential streets late at night, especially if they have hoodies and backpacks.