

THE SUMMERFIELDS SPOTLIGHT

FOCUS ON THE NEIGHBORHOOD

A COMMUNITY WHERE DIVERSITY
IS VALUED, COMMUNICATIONS
ARE ENCOURAGED AND AN
ATTITUDE OF LEARNING FROM
ONE ANOTHER IS RESPECTED

October 2021

A Publication of the Summerfields Neighborhood Association

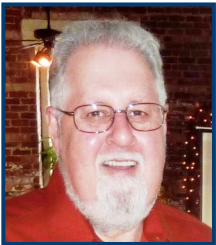
Been a Victim of a Crime? Report It!

The Fort Worth Police Department's North Division is comprised of the largest land mass and contains about 33% of Fort Worth's total population, yet we have the lowest non-violent and violent crime rates in Fort Worth, by far. The vast majority of our crimes are related to property. Most of our violent crimes are domestic related. What more can you ask for? Here's some food for thought.

The Fort Worth Police Department (FWPD) staffs each division based mainly on two factors—their non-violent and violent crime rates. Our North Division currently has the fewest assigned police officers of any division in Fort Worth. Why? Even with the largest land area and population, we have the lowest crime rates of any division in Fort Worth, even with a heavy influx of homeless people into our area. While our low crime rate is good, our police staffing leaves little room for error. Remember, once something gets out of hand, it becomes much harder to get it back under control. So, our crime reports need to accurately reflect our crime statistics so that we can retain at least adequate officer staffing in our area.

Have you been a victim of a crime that you felt wasn't worth reporting? Has anyone ever entered your car, ransacked it, but took nothing? Someone taken a package of not much value from your porch? Someone steal a bike or lawn equipment from your yard. Nuisances, right, so why should you take the time to report it to the police? What good would it do, they'll never find the criminals anyway, right? The answer is simple, the FWPD needs accurate crime reporting to assure each division's staffing is adequate to serve their residents.

You don't even have to call an officer out. You can call a police non-emergency number at 817-392-4222 and they can steer you DÉCOR for a telephone report.



SNA Presidents Corner

I apologize for having to delay our October membership meeting. I came down sick not long before the meeting and had some symptoms associated with COVID. I'm feeling much better and have had one negative test, but we didn't want to risk infecting anyone.

The meeting has been rescheduled to November 15th. We plan to have two guest speakers at our meeting. First is Manya Shorr, Director of the Fort Worth Public Library System. She will bring you up to speed on library programs and events. Also, since there were several concerns raised at our last meeting with code violations in our community, we plan to ask our area's Code Compliance Officer to speak and address residents' concerns.

This pandemic has really impacted SNA operations. Many things we want to implement have had to be put on hold because of the inability to meet face to face with members who have volunteered to take on tasks. From reading recent news the medical community seems to think it will be well into 2022 before things return to some semblance of normalcy. Please bear with us as we try to sustain the SNA during these difficult times.

We have remained active if not visible in the neighborhood. We continue to report code violations, primarily solid waste and high grass and weeds. We continue to report inoperative street lights, work property rezoning requests in our area, and work proposed developments in or near our area.

Table of Contents

Pg 2-3 Development

Pg 4 City News

Pg 5-6 Code Info

Pg 7 Crime Map

New Area Businesses

The Summit, a cigar bar, has leased the space in the strip center on the north side of the 3000 block of Western Center Blvd., near the I35W access road. They are renovating the space formerly occupied by Jake's Burgers.

Express Employment is now operating from the business office complex located at intersection of Sandshell Blvd. and Hartnett. They previously shared a building with Popeye's Chicken in the 2900 block of Western Center.

MBC Staffing, another employment-related business, has opened in a suite in the west side of the Albertson's Center.

Developments Currently in Progress

Penny Paws Veterinary Clinic has broken ground on their new facility. It is located in the 3800 block of Basswood on the vacant land between the existing 7-11 convenience store and the child care center. No completion or opening date is known.

A convenience store is under construction at 4550 Basswood Blvd., just to the east-of Ace Hardware. Long-time residents may remember that this site originally had a privately run recreational facility with tennis courts and a swimming pool. It went out of business in the early 1990s.

A Goodwill Industries store and drop-off station is now open for business at the southeast intersection of Basswood and Sandshell Blvds.

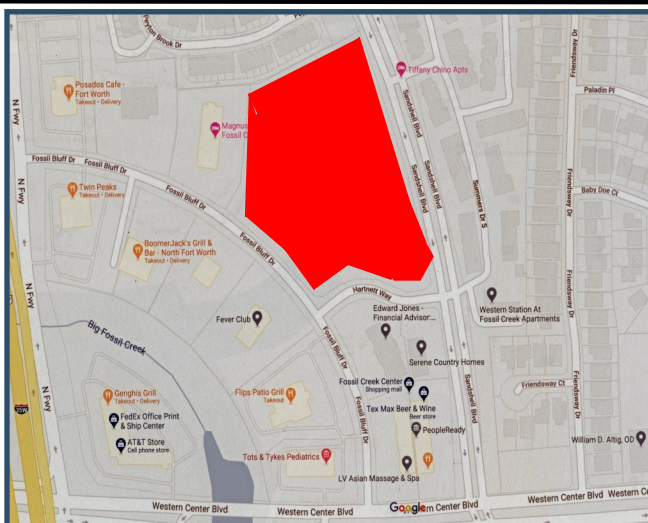
A car wash is under construction at the southwest intersection of Sandshell and Basswood Blvds. Signs on the property indicate they are now hiring for car wash staff.

KISD School Construction Continues in our Area

Three schools in our area are in different stages of construction. The new Heritage Elementary facility is complete except for finishing touches. After the new building is completed, the old Heritage Elementary facility is scheduled to be taken down.

Construction has commenced at Parkview Elementary School. Construction started April 1st, 2021. Off and on road closures on Bayberry and Longstow are coming. The old facilities will be torn down in stages, the current facility has to support students for the 2021/22 school year. After completion of the new two story structure most of the old-school will then be taken down. The project is scheduled to complete in June 2022.

The construction phase of the renovation of Fossil Hill Middle School started on April 1st. Fencing has been installed in the parking lot behind the school. The renovation is scheduled to complete in June 2022.



Standard Multi-Family Apartments Proposed In Our Area

A zoning change has been approved to allow construction of a 200 unit apartment complex on the land bordered by Fossil Bluff, Hartnett, and Sandshell Blvd.

This is the land just to the south of the Carriage Place townhomes, who's Association the SNA supported during the zoning process.

While the SNA has traditionally opposed new standard multi-family zoning changes, this is not a normal situation. Because of the risk of less desirable construction we conditionally supported building apartments on this land.

Area Road Construction Updates

The extension of the I35W access road from Western Center south and west to the Mark IV Parkway and Loop 820 intersection is well under way. This will allow residents who want to go west on Loop 820 to stay on the I35W south access road from Western all the way to Mark IV, avoiding the traffic snarl of the I35W and Loop 820 interchange. Once completed, we will probably soon see the start of commercial and industrial development on the vacant land along the access road.

The Basswood and N. Beach intersection improvement project, funded in the City's last Capital Improvement Program (CIP) bond package, started in April. This project will install two turn lanes in every direction to help alleviate traffic congestion at this busy intersection. It will also install curbs and controlled crossings at all intersections, update the traffic light system, and add lane signs. It is scheduled to complete in December 2021.

The project to widen N. Riverside Drive to a four lane road from North Tarrant Parkway northward to the Shiver Road roundabout started in July. Completion is schedule for August 2022. This second N. Riverside Drive road improvement project will provide four lanes from N. Tarrant Parkway northward to the existing Shiver Road traffic circle . It will also rework all four sides of the N. Tarrant and N. Riverside intersection, complete with updated traffic signals and crossings.

The residents on Creekfall are experiencing the inconveniences encountered when the City does a complete replacement of the street substructure and curbs. We live on Longleaf Lane which had this done about ten years ago, so we can share your pain. It is worth it in the long run.

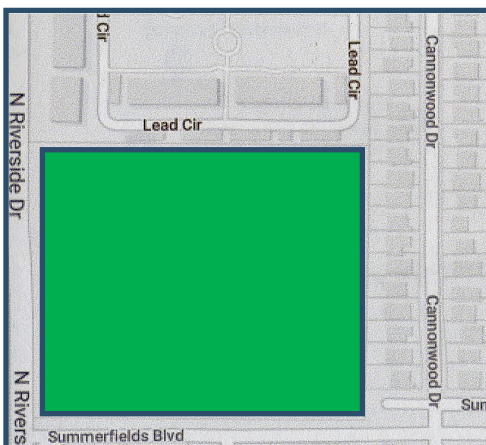
Other Developments

Another seniors only housing facility (55+) is being planned for our area. The proposed location is on the west side of North Beach Street just north of North Tarrant Parkway. It is planned for the vacant land behind the strip center on the west side of North Beach (behind the Sonic). This development is still in the early stages and is working it's way thought the zoning/platting process with the City.

The Starbucks on North Beach near Wal-Mart should open in the near future. Construction is almost complete and they are now hiring

Ground Broken on a Senior Housing Apartment Complex

With the completion of the southern N. Riverside and Summerfields Blvd. road projects, construction has started on the seniors only (55+) multi-family project. The SNA supported this project because we felt it was a better fit than what could be built under the old commercial zoning. It is a good fit for that location. It will have a minimal traffic footprint, offer a much needed housing option to area seniors, and pay KISD school taxes without adding any children to the school system. We thought these positives outweighed the loss of a weed-filled field full of low quality trees or a possible strip center.



Concept Drawing

Homeless Presence High in Summerfields Area

by Lance Griggs

I received much of my information from people who deal with the homeless on a daily basis. This problem is a complex issue, so complicated it seems to defy a solution. Americans are very generous. It's our nature to help those in need. We tend to picture a homeless person as someone who lives paycheck-to-paycheck, has lost their job and is temporarily displaced. Those people probably make up less than 2% of the homeless population, and they usually use Fort Worth's more than adequate support systems to get back on their feet.

Unfortunately, that view does not apply to a vast majority of panhandlers. Panhandlers mainly fall into two major categories: (1) the chronic homeless, most with mental and behavioral issues as well as substance abuse problems that traps them in the homeless cycle; and (2) the professionals who panhandle for a living.

Giving to panhandlers is up to you. Just realize that your money is most probably not going toward food, shelter, or clothing. Fort Worth has a good support system that provide those services. The odds are probably about 10 to 1 that the donations are feeding an addiction or providing professionals income in lieu of a job.

We have groups and individuals who panhandle as a profession. Some wear uniforms and collect donations to support churches or charitable institutions. Investigations of these groups found no such affiliations.

Then we have the Gypsy Travelers in our area. FWPD is very aware of them. They are an eastern European group that have migrated to America. They are professional panhandlers and live together in one neighborhood in Arlington. From there they disperse over the City to panhandle. They usually have a man, a woman and a baby (not necessarily theirs) sitting at an intersection pleading for money or food. They have been seen leaving their panhandling site, walking to late model car, and driving away.

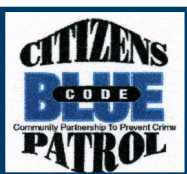
Again, it's your choice to give. I just wanted you to have this information before doing so.

Crime Prevention Programs

The City of Fort Worth and the Fort Worth Police Department offer many crime prevention programs for its residents. Two of the most popular are Crime Watch and Citizens on Patrol. Fort Worth has thousands of volunteers currently active in these two programs and both have proven very effective in reducing neighborhood crime. Summerfields has active volunteers in both programs.



Crime Watch is a very successful national program administered by the Fort Worth Police Department. Crime Watch establishes and trains a block of neighbors on how to look after their street. Once a sufficient number of residents in a block are organized, Crime Watch signs are posted on their street and they are trained on how to identify and report possible criminal activities they observe. Who better than the people who live on a street to notice out of place cars and suspicious activity. It's simply good neighbors knowing what to look for and watching out for each other. If you are interested in forming a Crime Watch on your street, you can contact FWPD Crime Prevention Specialist Rosalinda Mendoza at 817-392-3170.



The Citizen on Patrol (COP) program trains citizen volunteers to actively patrol their community in cars, on foot, or on bicycles. Once volunteers pass a background check, complete a four hour training class, and complete a training ride with an experienced Cop patroller, they patrol their neighborhood. Upon completion of the training these volunteers are issued police radios and equipment and are ready to patrol on their own.

COP patrollers carry no weapons. There are no scheduled patrols, volunteers simply go out when they have the time. These patrols are strictly non-confrontational, COP patrollers do not approach or get involved in any way with possible offenders. They simply act as extra eyes and ears for the police. They observe, report, and stay at a safe distance from the incident they are observing. Fort Worth's Citizen on Patrol program has received national and international acclaim.

If you are interested in joining Citizens on Patrol, you can contact the North Division COP Coordinator Cindy Strause at 817-392-3172.

Our main code issue in Summerfields is solid waste incorrectly placed curbside. Not following the guidelines usually results in waste not picked up, which detracts from the street's appearance and can lead to fines. No one wants to live in a neighborhood with trash sitting by the street for too long. It detracts from the neighborhood's appearance, makes selling homes more difficult, and eventually lowers property values. Because of this the SNA aggressively monitors waste disposal violations and reports them to Code Compliance. We do not like reporting violations that can result in fines, but there is often no alternatives left to us, We much prefer that residents become educated on the City's waste disposal processes, but will not stand idle while trash accumulates in our neighborhood.

The following are the most common violations we observe:

- Plastic bags containing solid waste (including leaves) placed curbside. *Anything in a plastic bag must be placed in the brown garbage cart to be picked up.* Hardware stores sell acceptable paper yard bags for disposing of yard recyclable waste such as clippings, leaves and small branches
- Bulk waste placed curbside too early, sometimes up to three weeks before the next scheduled pickup. Doing so detracts from the street's appearance and could impact neighbors trying to sell their homes.
- Placing bulk waste too close to objects in the yard. Many of the trucks use hydraulic arms to load waste, and if you place it too close to objects such as mail boxes or light poles it may prevent them from picking it up.
- Different types of bulky waste mixed together. Brush and paper-bagged leaves should be separated from furniture and other bulk items. They are picked up by different trucks and go to different locations. Brush and yard clippings are taken to a City facility where along with the paper bags are converted into mulch. This is the main reason they will not pick up yard waste in non-recyclable plastic bags.
- Mixing waste and recyclable items in the Recycle container. Waste and recyclables are picked up by different trucks. Contaminating the Recycle container with household waste will result in the bin not being emptied.
- Placing household and yard chemicals in the recycle or trash containers. These items should be taken to the Environmental Collection Center (ECC) on Bridge Street. You simply drive though, show your driver's license to show you are a Fort Worth resident, and they empty your vehicle for you. See details on the City's web site.
- Placing any electronic item or major appliance curbside for pick up. All electronics should be taken to Brennen Street for disposal. Electronic items such as TVs have integrated circuitry that contain hazardous chemicals such as arsenic. They are disposed of separately so as not to contaminate the landfills.
- Overflowing Waste and Recycle bins. Called "snow cones" because the lid cannot be closed, they can result in the bin not being emptied. Again, the trucks are automated and if the operator feels they cannot empty the container without spillage they will usually bypass the container, thus leaving the resident with another week before it is again eligible for pick up.
- Trash bins left on the street for days after the scheduled pickup date.

Also remember that small limbs (less than 8 feet in length and four inches in diameter) can be placed curbside for pickup with your scheduled weekly trash. Only larger limbs have to wait for the monthly bulk pick up..

BULK WASTE GUIDELINES

Note: Bulk pickup week for Summerfields begins on the second Monday of each month and runs through the following Saturday. Bulk waste should not be placed curbside until the weekend before your scheduled pickup week. For more information we urge our residents to visit the Solid Waste webpage on the City's website (see the link at the end of this article).

The following information was provided by the City of Fort Worth Solid Waste Department:

Bulk collection is once a month. The New guidelines are in place, so brush up before your next monthly collection

The city's Solid Waste Services has new easy-to-follow steps to make residential bulk collection safer and more effective for pickup. (continued on page 6)

BULK WASTE GUIDELINES—Continued from page 5

The goal is to not only collect the waste, but to dispose of it in a safe manner and, when possible, keep it out of the landfill. For example, tree limbs, branches and yard waste are turned into mulch.

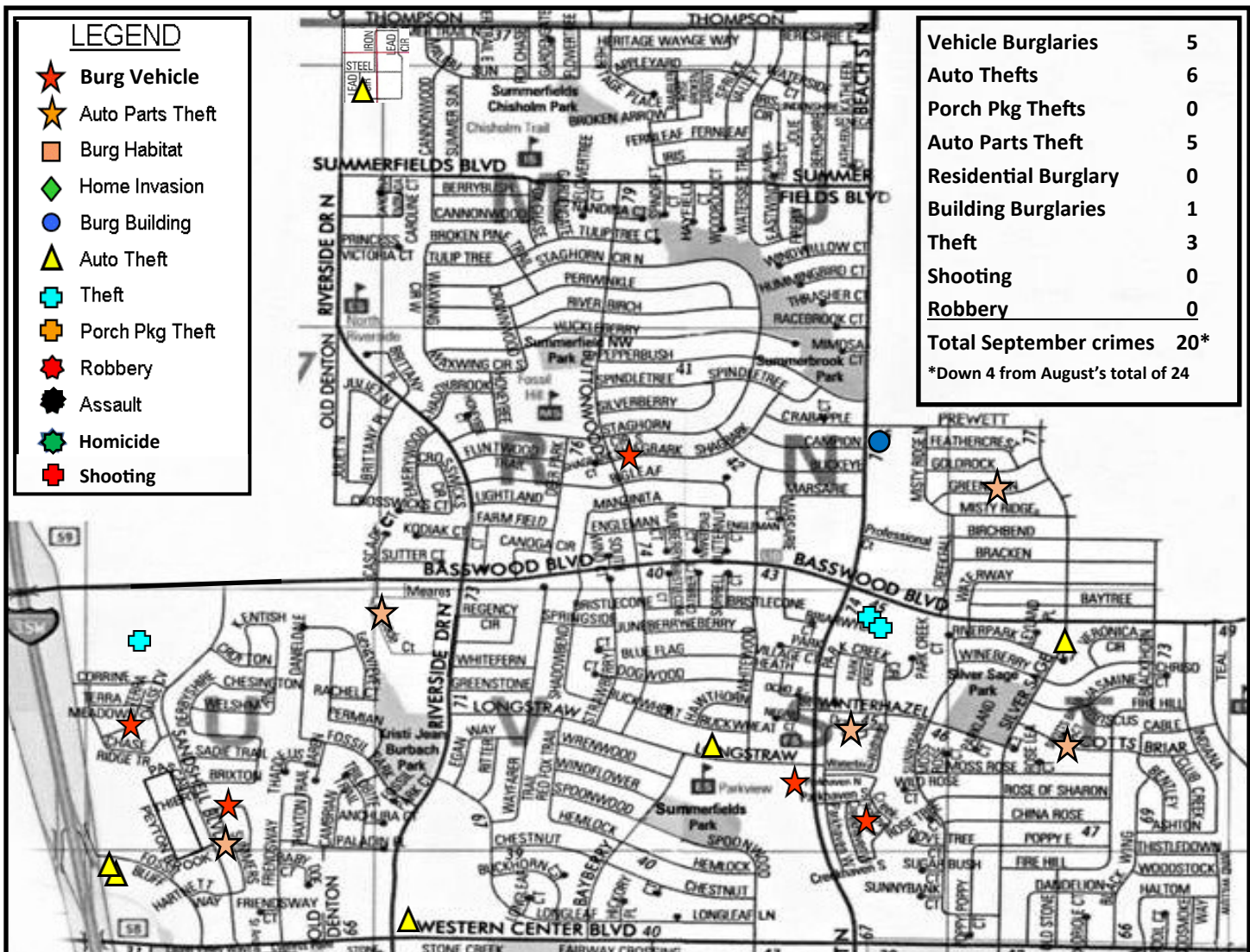
To help curbside pickup go as smoothly as possible, follow the program directions and avoid incurring fines. Here are some best practices and program guidelines:

- Bulk items must be placed on the curb by 7 a.m. Monday of your scheduled collection week. Make sure the pile is not blocked by a vehicle.
- Bulk piles are limited to 10 cubic yards (6 feet by 8 feet by 6 feet), the size of a Volkswagen bug car.
- Plastic bags are not allowed outside the trash cart; residents may incur fines if plastic bags are placed curbside.
- All piles, paper yard waste bags and carts must be separated by at least 2 feet to be collected and to avoid extra fees. No materials can be placed between piles since this creates one large, out-of-compliance pile.
- Any items that fit in the brown garbage cart are not considered bulk and should be put in plastic bags and then placed into the brown garbage cart.
- Large limbs refers to those more than 4 inches in diameter and over eight feet long. Brush smaller than this is considered yard waste and can be collected at the curb on your weekly trash pickup day as part of the yard waste collection program. It must be separated from items like mail boxes, carts, large limbs and any bulk piles

To learn more about the program details, including what materials cannot be set out for bulk collection, check the Solid Waste webpage. <http://fortworthtexas.gov/solid-waste/bulk/>.

Solid Waste Services At-A-Glance					
Questions? Download the Fort Worth Garbage & Recycling App					
	WHEN	HOW	AMOUNT/SIZE	DETAILS	NO
YARD	Weekly on pickup day; set out by 7 a.m.	In paper bags, or optional purchase of green yard cart	Unlimited paper yard bags - 30 gallon size	Place 2 ft. from carts or other objects (cars, trees, mailboxes, water and gas meters.)	No plastic bags or trash
Yard Trimmings Leaves, twigs, grass, shrubs					
Brush, Tied Small Branches	Weekly on pickup day; set out by 7 a.m.	Bundled, tied with string or twine	Unlimited bundles, 8 ft. long, 40 lb. max	Place 2 ft. from carts or other objects	No nylon or plastic straps, ties or wire
Brush, Untied Large Branches	Weekly on pickup day; set out by 7 a.m.	Stacked branches only. All branches should be in one pile	Limited to 10 cubic yards (8 ft. long x 6 ft. wide x 6 ft. tall) max, about size of VW Beetle car. Branches no longer than 8 ft. and up to 4 inches in diameter	Place 2 ft. from carts or other objects. More than 10 cubic yds. collected within 72 hours billed to resident	No stumps, plastic bags, trash, fencing, lumber, or household bulk items
RECYCLING	Weekly on pickup day; set out by 7 a.m.	Unbagged items. Close cart lid completely. Clean, dry and empty items.	As much recycling as can fit with the blue cart lid closed. Second blue cart available on request - free.	May take extras to a drop-off station. Only put acceptable items in the cart. Place 2 ft. from carts or other objects	No plastic bags, Styrofoam, paper towels, food, plastic wrap, electronics, clothes, medical waste
Blue Cart Visit website or app for all items that can be recycled.	Can set cart out after 6 p.m. the day before your pickup day				
GARBAGE	Weekly on pickup day; set out by 7 a.m.	In tied plastic bags inside brown cart. Close lid completely. Place 2 ft. from carts or other objects.	Your choice: a -32, 64- or 96-gallon cart (price varies with size). As many bags as can fit in brown cart with lid closed	Options for extra garbage: 1. Take to drop-off station 2. Upgrade cart size 3. Purchase city-authorized Pay Bags	No unbagged items; no bags outside cart or stacked on cart
Brown Cart Household waste only.	Can set cart out after 6 p.m. the day before your pickup day				
BULK ITEMS	Monthly on pickup day; set out by 7 a.m. the Monday of your assigned week; pickup will be any time between that Monday and Saturday	Stacked on curb in one pile. Acceptable items that are too large to fit in the garbage cart. Separate household bulk and large brush piles	Limited to 10 cubic yds. (8 ft long x 6 ft. wide x 6 ft. tall) max; size of a VW Beetle car. More than 10 cubic yds. billed to resident.	Can be set out after 6 p.m. the Friday before your assigned week. Includes fencing, stumps, lumber in bulky pile. Take extra to a drop-off station	No plastic bags, tires, glass, business waste, electronics, sheet-rock, or appliances with coolant or gas
DROP-OFF STATIONS	Open: M-F 8 a.m. - 6 p.m. Sat 8 a.m.- 5 p.m. (Hours subject to change)	Drop-off Station #1: 2400 Brennan Ave. 76106 Drop-off Station #2: 5150 Martin Luther King Jr. Frwy 76119 Drop-off Station #3: 6260 Old Hemphill Rd. 76134 Drop-off Station #4: 301 Hillshire 76052	Bring a recent water bill, drivers license or other official ID to prove Fort Worth residency		No commercial waste, no rock or concrete
Fort Worth Residents Only. Accepting recyclables, brush, electronics, items for Goodwill and more!	Free for Fort Worth Residents				

Summerfields Area Crime Map for September 2021



Summerfields Crime Trends for September 2021:

- September property crimes decreased by four from August's total. There was a big drop in thefts but increases in car burglaries, car thefts, and auto parts thefts. Special details with FYPD working with COP volunteers helped.
- It is strongly recommended that vehicles parked outside a garage be locked and nothing left in view.
- The City is seeing a large increase in violent crimes—assaults, homicides, robberies and shootings. The North Division violent crime rate remains very low, with most violent crimes being domestic related.
- All of Fort Worth is seeing a spike in catalytic converters taken from vehicles parked outside and at businesses.

Crime Prevention Recommendations:

- If you park your car in the driveway, on the street or in a business parking lot, make sure it's locked. Most car burglaries are of unlocked vehicles. We have car burglars from all over Fort Worth come to our area and police say this is because our area has a reputation among thieves for not securing our property!
- Do not leave anything visible from the outside the vehicle. Doing so could motivate a burglar to forcibly enter.
- Close and lock your garage door. Remember, the door from your garage into your house is usually very flimsy!
- Request an assessment of your homes security from FYPD North Division Crime Prevention Specialist Rosalinda Mendoza (817-392-3170). She will survey your home and make recommendations on how to increase your security.
- Report individuals walking the residential streets after midnight, especially if they have hoodies and backpacks.