

# THE SUMMERFIELDS SPOTLIGHT

A COMMUNITY WHERE DIVERSITY IS VALUED, COMMUNICATIONS ARE ENCOURAGED AND AN ATTITUDE OF LEARNING FROM ONE ANOTHER IS RESPECTED

FOCUS ON THE NEIGHBORHOOD

September 2021

A Publication of the Summerfields Neighborhood Association

## Tickets Now on Sale for Bell Fort Worth Alliance Air Show

The 31st Bell Fort Worth Alliance Air Show will offer a hybrid air show open to the public Oct. 23-24. Choose between Park, Picnic and Play options this year.

**Park:** Purchase tickets to park in the general admission parking or premium parking areas.

**Picnic:** Load up the chairs, picnic blanket, football and cornhole set and enjoy an old-fashioned outdoor picnic with family and friends within your “parking pod” without having to go too far to watch the show. Add to your parking ticket upgraded seating options in the Captains’ Club sponsored by Hillwood or the new VIP Pinnacle Club.



**Play:** Take a break from the family picnic or seating area and play in the free Landing Zone, a 1.5-acre area featuring 20-plus exhibitors, a beer garden, food concessions, simulators, kids activities and more. Catch a free ride on a tram shuttle transporting guests from parking lots to the Landing Zone and back.

Be part of the VIP/Media Day on Friday, Oct. 22. A limited number of tickets are available only for seating and photo areas on Friday, including VIP Pinnacle Club, Captains’ Club, Photo Pit and Sunset Photo Tour. General admission parking and the Landing Zone are not open on Friday. Tickets are available online only;



## SNA Presidents Corner

I really enjoyed meeting with everyone at our July General Membership Meeting. After the long pandemic-induced delay it was very enjoyable and felt good to get back to some sense of normalcy.

The Board is working two items from the meeting. One is setting up zones where SNA volunteers can routinely patrol to find and report Code Compliance problems in our area. The second is establishing an SNA Facebook presence to see if it will help in increasing our membership. With guidance from the SNA Board, one of our members volunteered to oversee the SNA Facebook page.

Our next meeting is scheduled for October 11th. With the current increase in COVID cases in Texas we need to get closer to the meeting date to determine if or where the meeting will be held. We are debating holding it at the library or the FWPD sector on N. Riverside Dr. The main factor will be the status of the COVID pandemic and the governmental guidelines in effect on October 11th.

We plan to have two guest speakers at our meeting. First is Manya Shorr, Director of the Fort Worth Public Library System. She will bring you up to speed on library programs and events.

Also, since there were several concerns raised with code violations in our community, we plan to ask Meghan Falcon, our area’s Code Compliance Officer, to speak and address residents’ those concerns.

### Table of Contents

Pg 2-3 Development

Pg 4 City News

Pg 5-6 Code Info

Pg 7 Crime Map

## New Area Businesses

The Summit, a cigar bar, has leased the space in the strip center on the north side on the north side of the 3000 block of Western Center, near the I35W access road. They will renovate the space formerly occupied by Jake's Burgers.

Express Employment is now operating from the business office complex located at intersection of Sandshell Blvd. and Hartnett. They previously shared a building with Popeye's Chicken in the 2900 block of Western Center.

MBC Staffing, another employment-related business, has opened in a suite in the west side of the Albertson's Center.

---

## Developments Currently in Progress

Penny Paws Veterinary Clinic has broken ground on their new facility. It is located in the 3800 block of Basswood on the vacant land between the existing 7-11 convenience store and the child care center. No completion or opening date is known.

A convenience store is under construction at 4550 Basswood Blvd., just to the east-of Ace Hardware. Long-time residents may remember that this site originally had a privately run recreational facility with tennis courts and a swimming pool. It went out of business in the early 1990s.

A Goodwill Industries store and drop-off station is now open for business at the southeast intersection of Basswood and Sandshell Blvds. .

A car wash is under construction at the southwest intersection of Sandshell and Basswood Blvds. Signs on the property indicate they are now hiring for car wash staff.

---

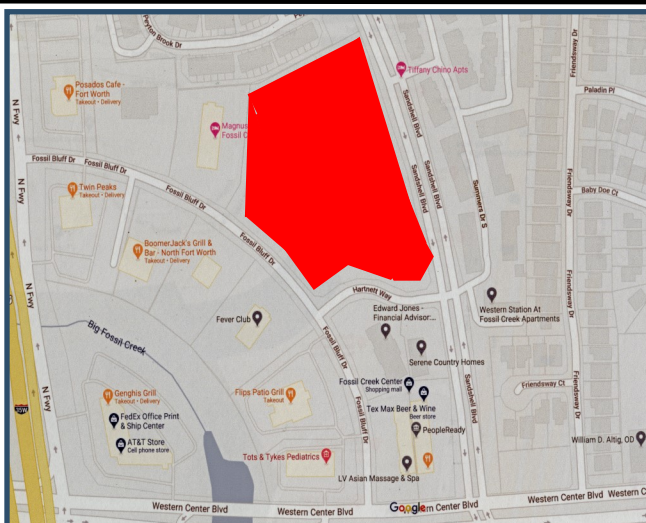
## KISD School Construction Continues in our Area

Three schools in our area are in different stages of construction. The new Heritage Elementary facility is complete except for finishing touches. After the new building is completed, the old Heritage Elementary facility is scheduled to be taken down.

Construction has commenced at Parkview Elementary School. Construction started April 1st, 2021. Off and on road closures on Bayberry and Longstow are coming. The old facilities will be torn down in stages, the current facility has to support students for the 2021/22 school year. After completion of the new two story structure most of the old-school will then be taken down. The project is scheduled to complete in June 2022.

The construction phase of the renovation of Fossil Hill Middle School started on April 1st. Fencing has been installed in the parking lot behind the school. The renovation is scheduled to complete in June 2022.

---



## Standard Multi-Family Apartments Proposed In Our Area

A zoning change has been approved to allow construction of a 200 unit apartment complex on the land bordered by Fossil Bluff, Hartnett, and Sandshell Blvd.

This is the land just to the south of the Carriage Place townhomes, who's Association the SNA supported during the zoning process.

While the SNA has traditionally opposed new standard multi-family zoning changes, this is not a normal situation. Because of the risk of less desirable construction we conditionally supported building apartments on this land.

## Area Road Construction Updates

The extension of the I35W access road from Western Center south and west to the Mark IV Parkway and Loop 820 intersection is well under way. This will allow residents who want to go west on Loop 820 to stay on the I35W south access road from Western all the way to Mark IV, avoiding the traffic snarl of the I35W and loop 820 interchange. Once completed, we will probably soon see the start of commercial and industrial development on the vacant land along the access road.

The Basswood and N. Beach intersection improvement project, funded in the City's last Capital Improvement Program (CIP) bond package, started in April. This project will install two turn lanes in every direction to help alleviate traffic congestion at this busy intersection. It will also install curbs and controlled crossings at all intersections, update the traffic light system, and add lane signs. It is scheduled to complete in December 2021.

The project to widen N. Riverside Drive to a four lane road from North Tarrant Parkway northward to the Shiver Road roundabout started in July. Completion is schedule for August 2022. This second N. Riverside Drive road improvement project will provide four lanes from N. Tarrant Parkway northward to the existing Shiver Road traffic circle . It will also rework all four sides of the N. Tarrant and N. Riverside intersection, complete with updated traffic signals and crossings.

The residents on Creekfall are experiencing the inconveniences encountered when the City does a complete replacement of the street substructure and curbs. We live on Longleaf Lane which had this done about ten years ago, so we can share your pain. It is worth it in the long run.

---

## Other Developments

The old Boston's Gourmet Pizza restaurant, located on the southbound I35W access road (behind Joe's Crab Shack), has completed renovation and is now open as a Boston's Pizza Restaurant and Sports Bar.

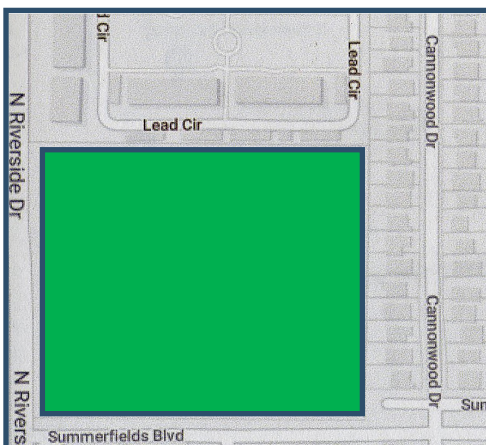
The Starbucks on North Beach near Wal-Mart should open in the near future. Construction is almost complete and they are now hiring

Takara Japanese Restaurant is now open at 3088 Basswood Blvd.

---

## Ground Broken on a Senior Housing Apartment Complex

With the completion of the southern N. Riverside and Summerfields Blvd. road projects, construction has started on the seniors only (55+) multi-family project. The SNA supported this project because we felt it was a better fit than what could be built under the old commercial zoning. It is a good fit for that location. It will have a minimal traffic footprint, offer a much needed housing option to area seniors, and pay KISD school taxes without adding any children to the school system. We thought these positives outweighed the loss of a weed-filled field full of low quality trees or a possible strip center.



Concept Drawing



## Parade of Lights Resumes as In-person Event

The GM Financial Parade of Lights is returning to the streets of downtown Fort Worth for the 39th year at 6 p.m. Sunday, Nov. 21. The theme is Holiday Miracles.

Due to the pandemic, last year's parade was held as a virtual broadcast. The parade was prerecorded in various downtown locations and featured signature floats, musical artists and entertainers.

Tickets for reserved street seats at this year's live event go on sale at 10 a.m. Sept. 15, and applications to enter a float are being accepted through Oct. 15.

The parade is produced by Downtown Fort Worth Initiatives Inc., whose mission is to make downtown a vibrant place to live, work and play. The parade was first staged in 1983 to help Fort Worth celebrate family and togetherness in a spirited way. It has grown to become one of the top illuminated parades in the country.

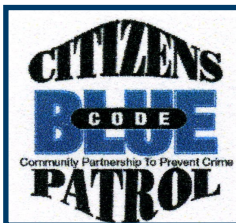


## Crime Prevention Programs

The City of Fort Worth and the Fort Worth Police Department offer many crime prevention programs for its residents. Two of the most popular are Crime Watch and Citizens on Patrol. Fort Worth has thousands of volunteers currently active in these two programs and both have proven very effective in reducing neighborhood crime. Summerfields has active volunteers in both programs.



Crime Watch is a very successful national program administered by the Fort Worth Police Department. Crime Watch establishes and trains a block of neighbors on how to look after their street. Once a sufficient number of residents in a block are organized, Crime Watch signs are posted on their street and they are trained on how to identify and report possible criminal activities they observe. Who better than the people who live on a street to notice out of place cars and suspicious activity. It's simply good neighbors knowing what to look for and watching out for each other. If you are interested in forming a Crime Watch on your street, you can contact FWPD Crime Prevention Specialist Rosalinda Mendoza at 817-392-3170.



The Citizen on Patrol (COP) program trains citizen volunteers to actively patrol their community in cars, on foot, or on bicycles. Once volunteers pass a background check, complete a four hour training class, and complete a training ride with an experienced Cop patroller, they patrol their neighborhood. Upon completion of the training these volunteers are issued police radios and equipment and are ready to patrol on their own.

COP patrollers carry no weapons. There are no scheduled patrols, volunteers simply go out when they have the time. These patrols are strictly non-confrontational, COP patrollers do not approach or get involved in any way with possible offenders. They simply act as extra eyes and ears for the police. They observe, report, and stay at a safe distance from the incident they are observing. Fort Worth's Citizen on Patrol program has received national and international attention.

If you are interested in joining Citizens on Patrol, you can contact the North Division COP Coordinator Cindy Strause at 817-392-3172.

Our main code issue in Summerfields is solid waste incorrectly placed curbside. Not following the guidelines usually results in waste not picked up, which detracts from the street's appearance and can lead to fines. No one wants to live in a neighborhood with trash sitting by the street for too long. It detracts from the neighborhood's appearance, makes selling homes more difficult, and eventually lowers property values. Because of this the SNA aggressively monitors waste disposal violations and reports them to Code Compliance. We do not like reporting violations that can result in fines, but there is often no alternatives left to us, We much prefer that residents become educated on the City's waste disposal processes, but will not stand idle while trash accumulates in our neighborhood.

The following are the most common violations we observe:

- Plastic bags containing solid waste (including leaves) placed curbside. *Anything in a plastic bag must be placed in the brown garbage cart to be picked up.* Hardware stores sell acceptable paper yard bags for disposing of yard recyclable waste such as clippings, leaves and small branches
- Bulk waste placed curbside too early, sometimes up to three weeks before the next scheduled pickup. Doing so detracts from the street's appearance and could impact neighbors trying to sell their homes.
- Placing bulk waste too close to objects in the yard. Many of the trucks use hydraulic arms to load waste, and if you place it too close to objects such as mail boxes or light poles it may prevent them from picking it up.
- Different types of bulky waste mixed together. Brush and paper-bagged leaves should be separated from furniture and other bulk items. They are picked up by different trucks and go to different locations. Brush and yard clippings are taken to a City facility where along with the paper bags are converted into mulch. This is the main reason they will not pick up yard waste in non-recyclable plastic bags.
- Mixing waste and recyclable items in the Recycle container. Waste and recyclables are picked up by different trucks. Contaminating the Recycle container with household waste will result in the bin not being emptied.
- Placing household and yard chemicals in the recycle or trash containers. These items should be taken to the Environmental Collection Center (ECC) on Bridge Street. You simply drive though, show your driver's license to show you are a Fort Worth resident, and they empty your vehicle for you. See details on the City's web site.
- Placing any electronic item or major appliance curbside for pick up. All electronics should be taken to Brennen Street for disposal. Electronic items such as TVs have integrated circuitry that contain hazardous chemicals such as arsenic. They are disposed of separately so as not to contaminate the landfills.
- Overflowing Waste and Recycle bins. Called "snow cones" because the lid cannot be closed, they can result in the bin not being emptied. Again, the trucks are automated and if the operator feels they cannot empty the container without spillage they will usually bypass the container, thus leaving the resident with another week before it is again eligible for pick up.
- Trash bins left on the street for days after the scheduled pickup date.

Also remember that small limbs (less than 8 feet in length and four inches in diameter) can be placed curbside for pickup with your scheduled weekly trash. Only larger limbs have to wait for the monthly bulk pick up..

## BULK WASTE GUIDELINES

**Note: Bulk pickup week for Summerfields begins on the second Monday of each month and runs through the following Saturday. Bulk waste should not be placed curbside until the weekend before your scheduled pickup week. For more information we urge our residents to visit the Solid Waste webpage on the City's website (see the link at the end of this article).**

The following information was provided by the City of Fort Worth Solid Waste Department:

**Bulk collection is once a month. The New guidelines are in place, so brush up before your next monthly collection**

The city's Solid Waste Services has new easy-to-follow steps to make residential bulk collection safer and more effective for pickup. (continued on page 6)



## BULK WASTE GUIDELINES—Continued from page 5

The goal is to not only collect the waste, but to dispose of it in a safe manner and, when possible, keep it out of the landfill. For example, tree limbs, branches and yard waste are turned into mulch.

To help curbside pickup go as smoothly as possible, follow the program directions and avoid incurring fines. Here are some best practices and program guidelines:

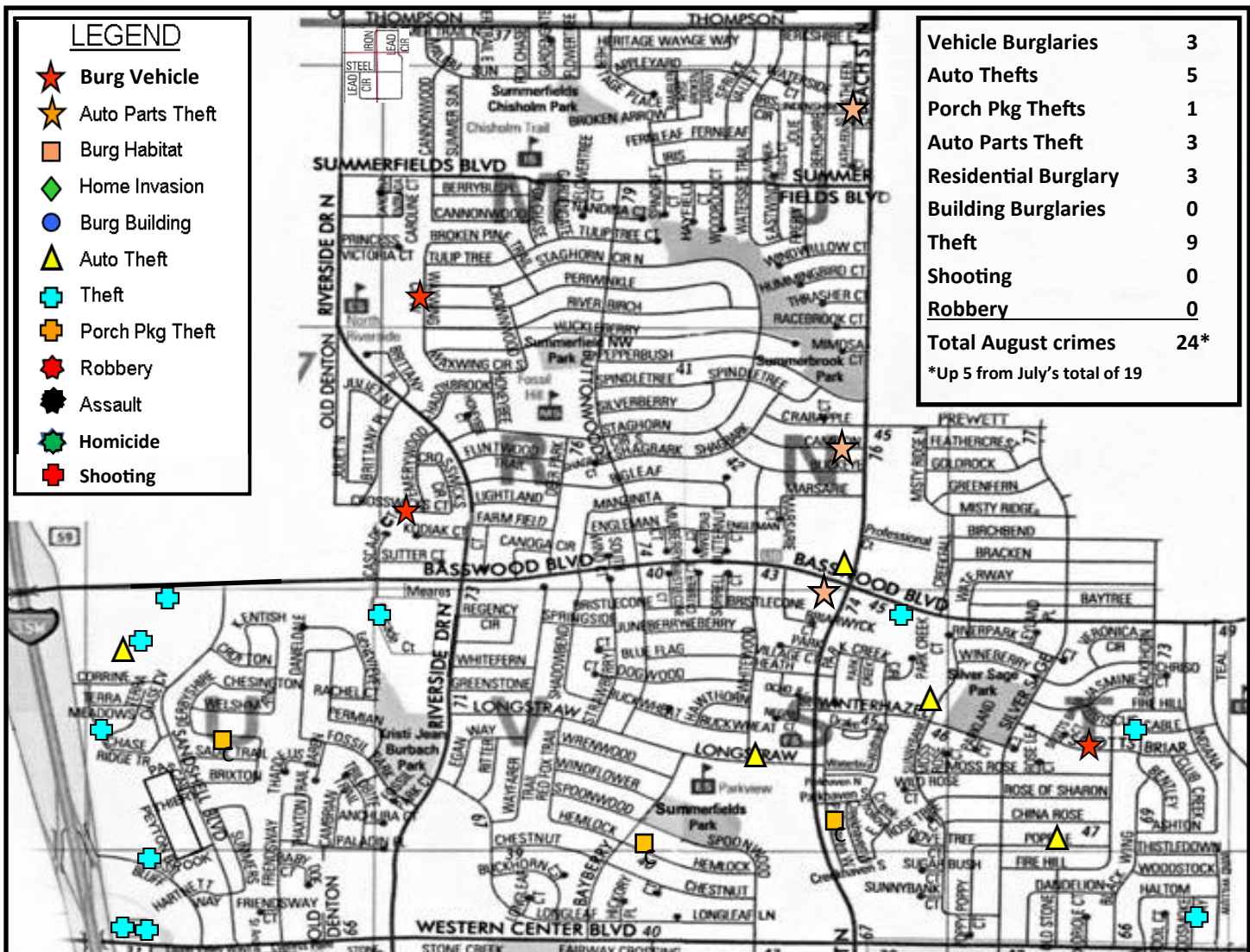
- Bulk items must be placed on the curb by 7 a.m. Monday of your scheduled collection week. Make sure the pile is not blocked by a vehicle.
- Bulk piles are limited to 10 cubic yards (6 feet by 8 feet by 6 feet), the size of a Volkswagen bug car.
- Plastic bags are not allowed outside the trash cart; residents may incur fines if plastic bags are placed curbside.
- All piles, paper yard waste bags and carts must be separated by at least 2 feet to be collected and to avoid extra fees. No materials can be placed between piles since this creates one large, out-of-compliance pile.
- Any items that fit in the brown garbage cart are not considered bulk and should be put in plastic bags and then placed into the brown garbage cart.
- Large limbs refers to those more than 4 inches in diameter and over eight feet long. Brush smaller than this is considered yard waste and can be collected at the curb on your weekly trash pickup day as part of the yard waste collection program. It must be separated from items like mail boxes, carts, large limbs and any bulk piles

To learn more about the program details, including what materials cannot be set out for bulk collection, check the Solid Waste webpage. <http://fortworthtexas.gov/solid-waste/bulk/>.

Solid Waste Services At-A-Glance					
Questions? Download the Fort Worth Garbage & Recycling App					
	WHEN	HOW	AMOUNT/SIZE	DETAILS	NO
<b>YARD</b>	Weekly on pickup day; set out by 7 a.m.	In paper bags, or optional purchase of green yard cart	Unlimited paper yard bags - 30 gallon size	Place 2 ft. from carts or other objects (cars, trees, mailboxes, water and gas meters.)	No plastic bags or trash
<b>Yard Trimmings</b> Leaves, twigs, grass, shrubs					
<b>Brush, Tied</b> Small Branches	Weekly on pickup day; set out by 7 a.m.	Bundled, tied with string or twine	Unlimited bundles, 8 ft. long, 40 lb. max	Place 2 ft. from carts or other objects	No nylon or plastic straps, ties or wire
<b>Brush, Untied</b> Large Branches	Weekly on pickup day; set out by 7 a.m.	Stacked branches only. All branches should be in one pile	Limited to 10 cubic yards (8 ft. long x 6 ft. wide x 6 ft. tall) max, about size of VW Beetle car. Branches no longer than 8 ft. and up to 4 inches in diameter	Place 2 ft. from carts or other objects. More than 10 cubic yds. collected within 72 hours billed to resident	No stumps, plastic bags, trash, fencing, lumber, or household bulk items
<b>RECYCLING</b>	Weekly on pickup day; set out by 7 a.m.	Unbagged items. Close cart lid completely. Clean, dry and empty items.	As much recycling as can fit with the blue cart lid closed. Second blue cart available on request - free.	May take extras to a drop-off station. Only put acceptable items in the cart. Place 2 ft. from carts or other objects	No plastic bags, Styrofoam, paper towels, food, plastic wrap, electronics, clothes, medical waste
Visit website or app for all items that can be recycled. <b>Blue Cart</b>	Can set cart out after 6 p.m. the day before your pickup day				
<b>GARBAGE</b>	Weekly on pickup day; set out by 7 a.m.	In tied plastic bags inside brown cart. Close lid completely. Place 2 ft. from carts or other objects.	Your choice: a -32, 64- or 96-gallon cart (price varies with size). As many bags as can fit in brown cart with lid closed	Options for extra garbage: 1. Take to drop-off station 2. Upgrade cart size 3. Purchase city-authorized Pay Bags	No unbagged items; no bags outside cart or stacked on cart
Household waste only. <b>Brown Cart</b>	Can set cart out after 6 p.m. the day before your pickup day				
<b>BULK ITEMS</b>	Monthly on pickup day; set out by 7 a.m. the Monday of your assigned week; pickup will be any time between that Monday and Saturday	Stacked on curb in one pile. Acceptable items that are too large to fit in the garbage cart. Separate household bulk and large brush piles	Limited to 10 cubic yds. (8 ft long x 6 ft. wide x 6 ft. tall) max; size of a VW Beetle car. More than 10 cubic yds. billed to resident.	Can be set out after 6 p.m. the Friday before your assigned week. Includes fencing, stumps, lumber in bulky pile. Take extra to a drop-off station	No plastic bags, tires, glass, business waste, electronics, sheet-rock, or appliances with coolant or gas
For items too heavy/bulky for the cart. Visit the website or app for more details. Place 2 ft. from carts or other objects.					
<b>DROP-OFF STATIONS</b>	Open: M-F 8 a.m. - 6 p.m. Sat 8 a.m.- 5 p.m. (Hours subject to change) Free for Fort Worth Residents	Drop-off Station #1: 2400 Brennan Ave. 76106 Drop-off Station #2: 5150 Martin Luther King Jr. Frwy 76119 Drop-off Station #3: 6260 Old Hemphill Rd. 76134 Drop-off Station #4: 301 Hillshire 76052		Bring a recent water bill, drivers license or other official ID to prove Fort Worth residency	No commercial waste, no rock or concrete
Fort Worth Residents Only. Accepting recyclables, brush, electronics, items for Goodwill and more!					



## Summerfields Area Crime Map for August 2021



### Summerfields Crime Trends for August 2021:

- August property crime rates were good but rose by five over July's low rate. These low rates can be attributed to several summer special details conducted by FWPd officers and the Citizens on Patrol volunteers.
- It is strongly recommended that vehicles parked outside a garage be locked and nothing left in view.
- The City is seeing a large increase in violent crimes—assaults, homicides, robberies and shootings. The North Division violent crime rate remains very low, with most violent crimes being domestic related.
- All of Fort Worth is seeing a spike in catalytic converters taken from a vehicle parked outside and at businesses.

### Crime Prevention Recommendations:

- If you park your car in the driveway, on the street or in a business parking lot, make sure it's locked. Most car burglaries are of unlocked vehicles. We have car burglars from all over Fort Worth come to our area and police say this is because our area has a reputation among thieves for not securing our property!
- Do not leave anything visible from the outside the vehicle. Doing so could motivate a burglar to forcibly enter.
- Close and lock your garage door. Remember, the door from your garage into your house is usually very flimsy!
- Request an assessment of your homes security from FWPd North Division Crime Prevention Specialist Rosalinda Mendoza (817-392-3170). She will survey your home and make recommendations on how to increase your security.
- Report individuals walking the residential streets after midnight, especially if they have hoodies and backpacks.